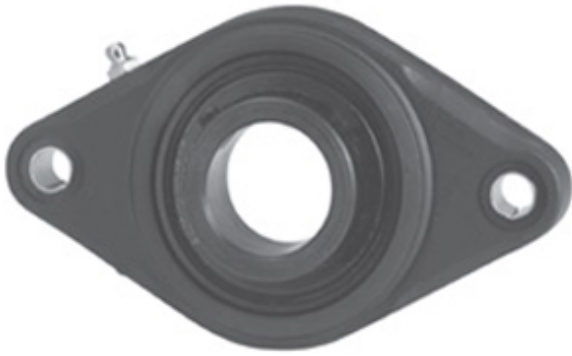




TIMKEN AXLE CORP.

LINK BELT KFXS220 Flange Block Bearings



KFXS220 Bearing 2D drawings and 3D CAD models

Bearing No. KFXS220

Category	Flange Block Bearings
Inventory	0.0
Manufacturer Name	REXNORD
Minimum Buy Quantity	N/A
Weight	0.68
EAN	0793699025996
Product Group	M06110
Number of Mounting Holes	2
Mounting Method	Set Screw
Housing Style	2 Bolt Flange Block
Rolling Element	Ball Bearing
Housing Material	Polymer
Expansion / Non-expansion	Non-expansion
Mounting Bolts	3/8 Inch
Relubricatable	Yes
Insert Part Number	SG220EL
Seals	Single Lip Contact
Housing Configuration	1 Piece Solid
Pilot Configuration	No Pilot
Inch - Metric	Inch
Long Description	2 Bolt Flange Block; 1-1/4" Bore; 5.1" Bolt Circle; 5.12" Bolt Spacing; 1 Piece Solid; Set Screw Mount; Polymer; Ball Bearing; 1-9/16" Length Thru Bore; Relubricatable; Single Lip
Other Features	Single Row Spherical



TIMKEN AXLE CORP.

	Intermediate Duty Black Housing Open End Extended Inner Race Food Grade Lubrication
Category	Flange Block
UNSPSC	31171501
Harmonized Tariff Code	8483.20.40.40
Noun	Bearing
Keyword String	Flanged
Manufacturer URL	http://www.rexnord.com
Manufacturer Item Number	KFXS220
Manufacturer Internal Number	5802599
Weight / LBS	1.5
Cartridge Pilot Depth	0 Inch 0 Millimeter
Nominal Bolt Circle Diameter Round	5.1 Inch 130 Millimeter
D	1.563 Inch 39.69 Millimeter
Cartridge Pilot Diameter	0 Inch 0 Millimeter
Bolt Spacing	5.12 Inch 130.048 Millimeter
d	1.25 Inch 31.75 Millimeter